



Leave an Impression.  
Like a Signature.

  
**Kalpataru**  
Heaven



GK Developer proudly presents "Kalpataru Heaven", which is 1 km distance Damana Square, Chandrasekharpur, Bhubaneswar. The new name among the emerging smart city of India.

We are the pioneers of bringing premium affordable houses to the home buyers. Our capability is delivery top quality of well designed homes on time with modern world class amenities. We would make you a proud owner of your premium home. The location is the greatest advantages with education, commercial hubs, shopping mall, Hospital for day today need.

## SPECIFICATION

### STRUCTURE :

RCC frame structure with in filled brick work .

### FLOORING :

Design range of verified tiles inside the flat and corridor/common areas are finished with kota/marble/tile design.

### KITCHEN :

Cooking platform is of granite with stainless steel sink, wall above the platform is finished with ceramic tiles up to 2'0" height.

### TOILET :

Premium quality antiskid floor tiles along with C.P. fitting. Walls are finished with tiles up to 7'0" height. Water supply is through concealed pipe network.

### DOORS :

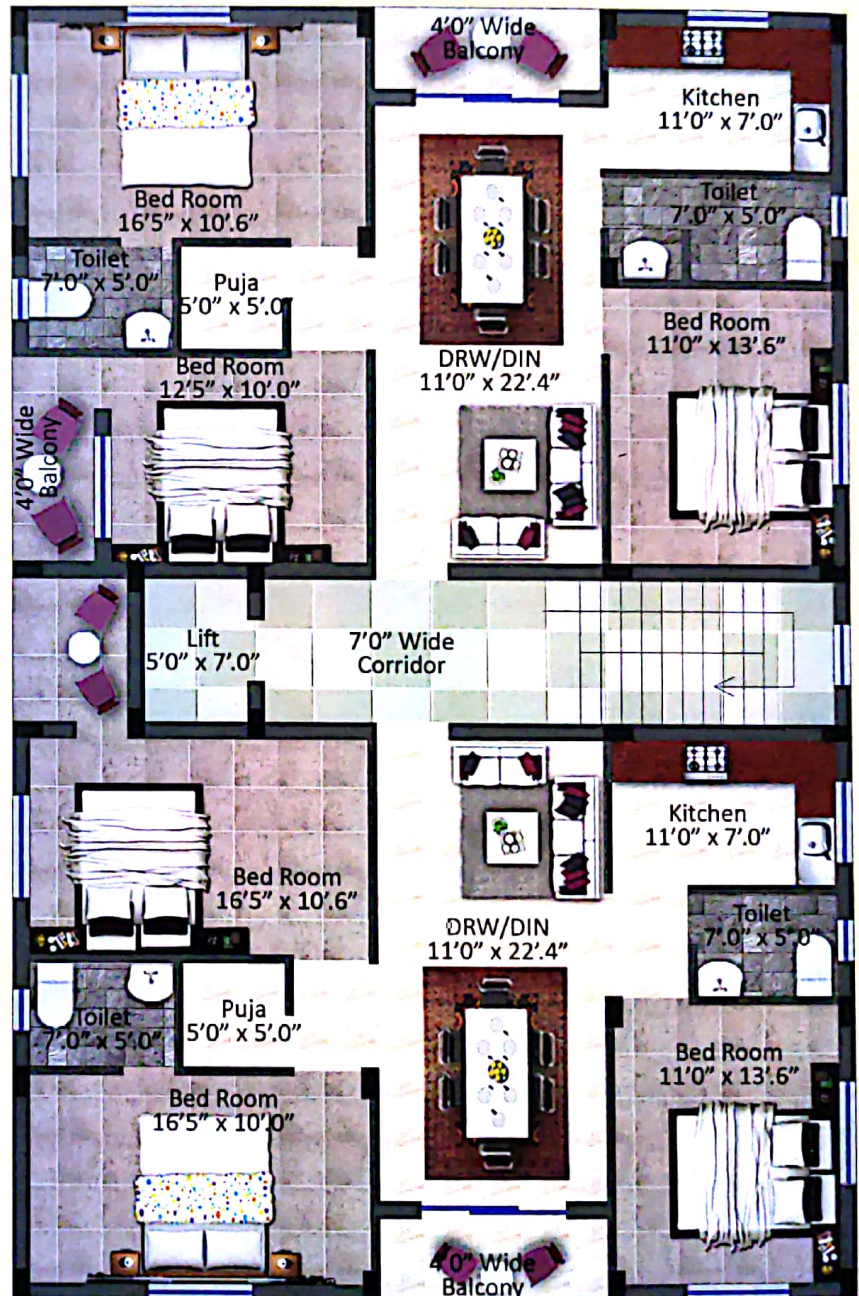
All doors are of factory made designed door with wood/concrete/UPVC door frame.

### WINDOWS :

All windows are of powder coated anodized aluminium frames with glazed sliding shutters with grill.

### ELECTRICAL :

Concealed electrical network with premium branded wire modular switches



TYPICAL FLOOR PLAN

## AREA STATEMENT

Flat No.	Carpet Area	B.U.A.	S.B.U.A.
101,201,301,401	1040 Sq.ft.	1130 Sq.ft.	1470 Sq.ft.
102,202,302,402	1030 Sq.ft.	1177 Sq.ft.	1530 Sq.ft.







## AMENITIES

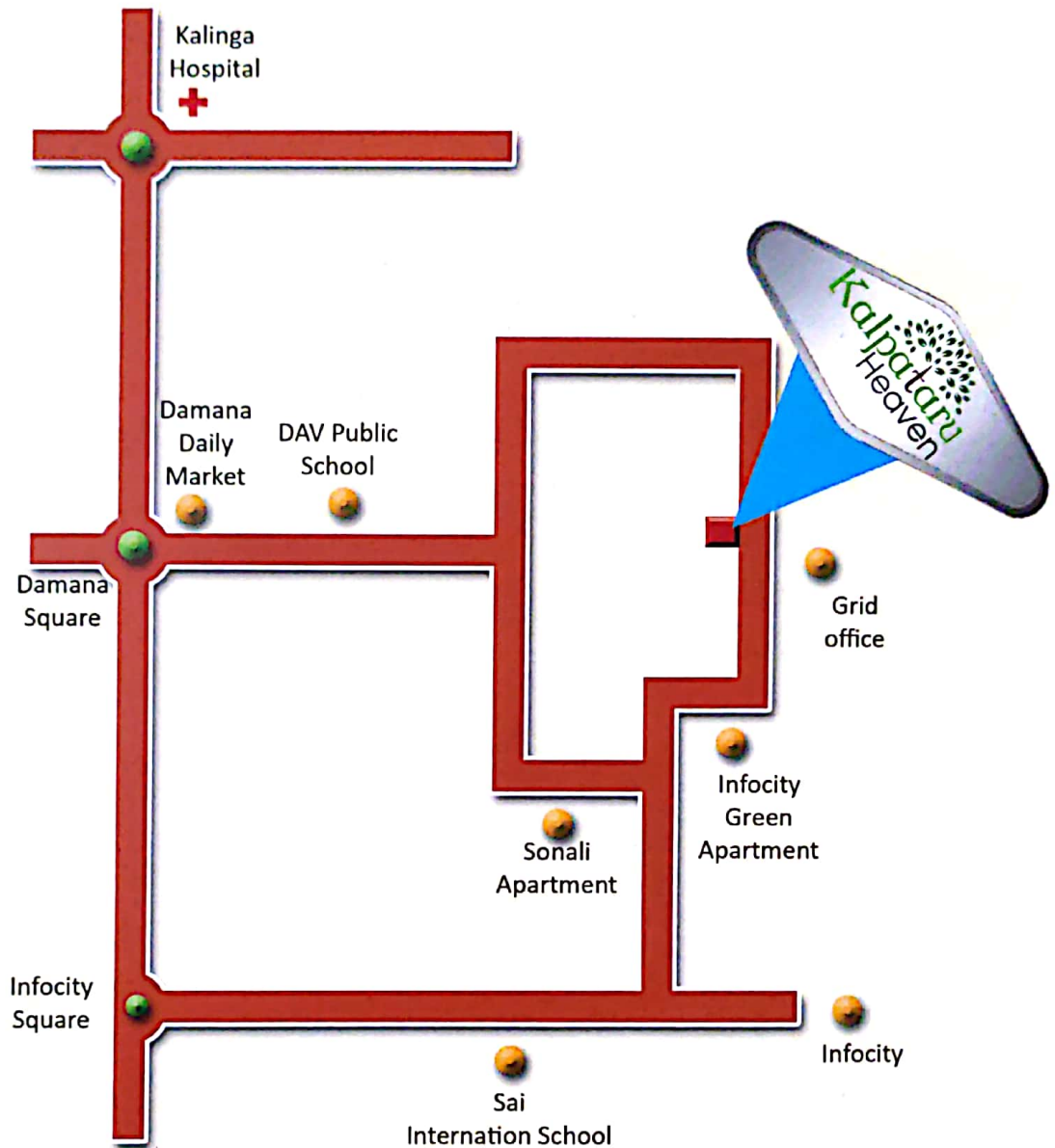
- ▶ Six passenger lift.
- ▶ CC TV at grand entrance.
- ▶ DG facilities.
- ▶ Community hall.

## PAYMENT SCHEDULE

▶ On booking	: 10%
▶ On execution of agreement (within 30 days of booking)	: 15%
▶ On completion of foundation (pilling foundation)	: 10%
▶ On completion of stilt floor roof casting	: 15%
▶ On completion of roof slab for respective floor	: 15%
▶ On completion of brick work for respective flat	: 10%
▶ On completion of flooring for respective flat	: 20%
▶ On completion or possession	: 5%



## LOCATION MAP :



**Developer :**



### **GK Developer**

Flat No 102, Sai Prasad enclave,  
Rasulgarh, Bhubaneswar -751010  
E-mail : [gkodisha@gmail.com](mailto:gkodisha@gmail.com)  
Mob: +91 9938212981

**Architect :**

### **R&P ASSOCIATES**

Plot No 491/2 (Behind Arya Samaj)  
Saheed Nagar, Bhubaneswar-7  
website : [www.rpassociate.in](http://www.rpassociate.in)  
Mob : 9437008609

The brochure is not a legal document. It has been produced for the general promotion of the development and for no other purpose. All information contained in this brochure is taken from design intent material and may be subject to further design development. These details do not form any part of any contract and whilst every effort has been made to ensure their accuracy, this cannot be guaranteed and intending purchasers should not rely on them as statements or representation of facts.